

RS, BK, BS

Boxes and cubicles for switch-control equipment

KI.06.2012



Certified acc. to
ISO 9001:2000



ISO 9001
Akredytacja PCA

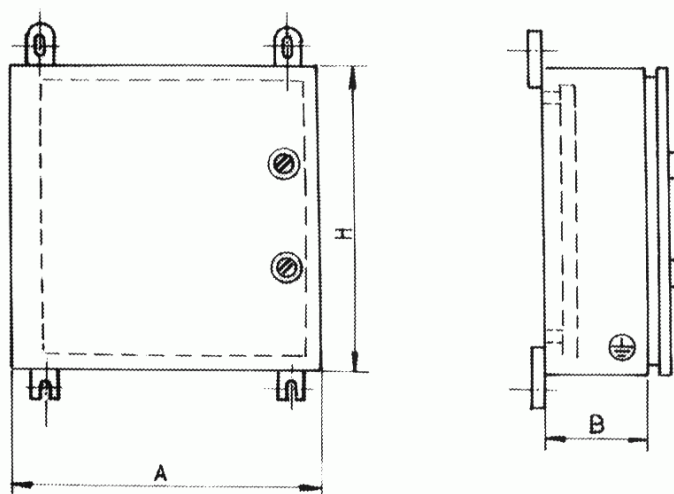


Boxes and cubicles type **RS**, **BK**, **BS** are provided for application as housings for apparatuses, instruments and devices for adjustment and regulation of manufacturing processes, which ensure the required operation and functioning even in very difficult sea and land conditions.

Housing type RS

RS ensures protection degree IP44. It is made as metal box with one or two doors. Assembly frame or plate for apparatuses is mounted inside on a back wall. Housing type RS is provided for hanging on a wall.

Boxes series RS, JP 44



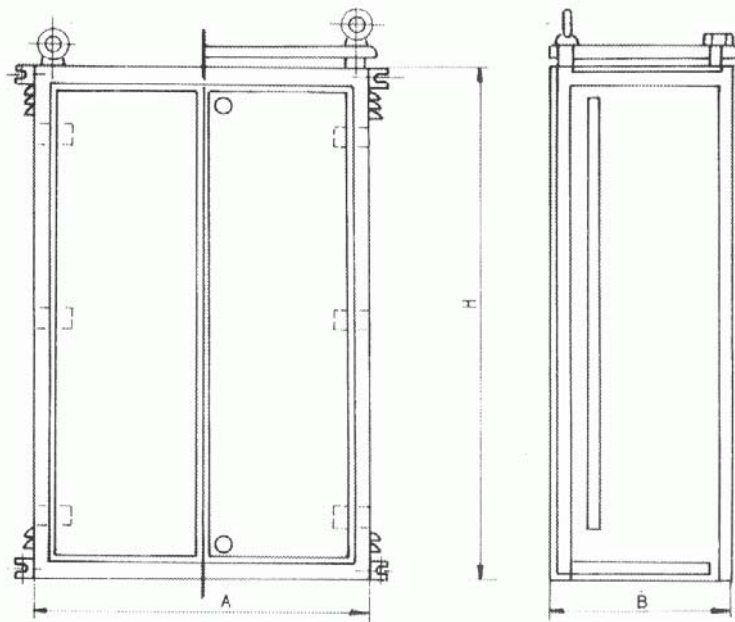
A	160	240	320	320	320	320	320	320	480
B	160	160	160	160	240	240	320	320	160
H	160	200	240	320	240	320	240	320	320
A	480	480	480	480	480	600	600	600	600
B	240	320	460	240	320	160	160	160	160
H	320	320	480	480	480	480	640	800	960
A	600	600	600	600	600	600	600	600	600
B	240	240	240	240	320	320	320	320	440
H	480	640	800	960	480	640	800	960	640
A	600	600	600	600	600	800	800	x	x
B	440	440	240	320	440	320	440	x	x
H	800	960	1200	1200	1200	1200	1200	x	x



Housing type BK

BK ensures protection degree IP23. It is made as a metal cubicle with one or two doors. Angle frame is provided inside as reinforcement. Fixed or moveable assembly frame or plate for apparatuses and electric instruments is mounted inside on a back wall. The housing can be installed as standing or hanging on a wall.

Boxes and cubicles series BK, JP 22÷23

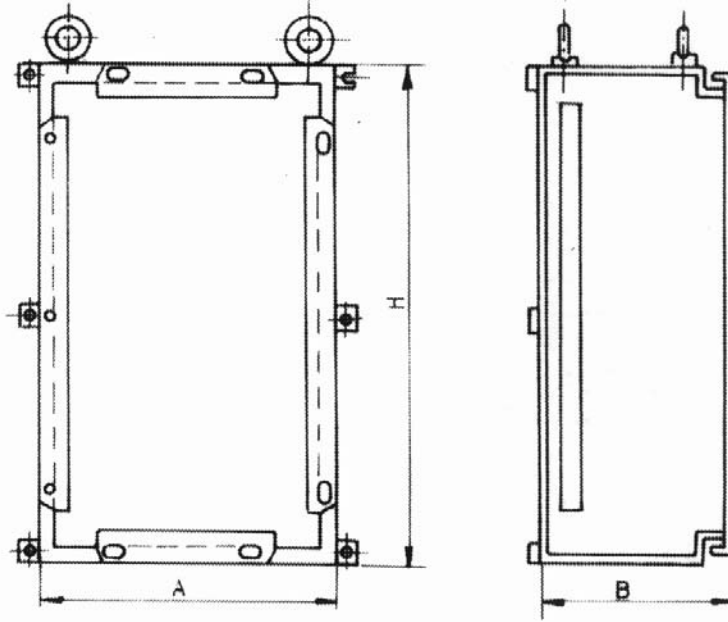


A	315	400	500	500	630	630	630	630	800
B	160	250	250	315	250	315	315	400	315
H	200	315	400	400	500	500	800	800	1000
A	800	800	800	800	800	1000	1000	1000	1000
B	500	315	500	315	500	315	500	315	500
H	1000	1400	1400	1800	1800	1800	1800	2000	2000

Housing type BS

BS ensures protection degree IP56. It is made as a cubicle or metal box with one door. Housing door is equipped with screw hinges. A channel with rubber sealing is provided on the door rim. The housing can be installed as standing or hanging on a wall.

Boxes and cubicles series BS, JP 56



A	315	400	500	500	630	630
B	160	250	250	315	250	315
H	200	315	400	400	500	500
A	630	630	800	800	800	800
B	315	400	315	500	315	500
H	800	800	1000	1000	1400	1400

Protection covering

Oven paints protect cubicles and boxes against rust. Kind and thickness of paint coating depends on environmental conditions existing in a place of exploitation. A Consumer selects colour of paint coating. Standard colour is RAL 7038 (light ash).

The Consumer can order other kind of anti-corrosive coating agreed with a producer.

Operating conditions

Housings type BK, RS, and BS are provided for indoor and outdoor installations. Ambient temperature for indoor installations shall not increase $+40^{\circ}\text{C}$ and its average value during 24h shall not increase $+25^{\circ}\text{C}$. Low limit of the ambient temperature is not smaller than -5°C .

Ambient temperature for outdoor installations shall not increase $+40^{\circ}\text{C}$ and its average value during 24H shall not increase $+35^{\circ}\text{C}$. Low limit of the ambient temperature is -25°C for mezo-thermal climate and -50°C for arctic climate.

Exploitation of cubicles and boxes in arctic climate shall be agreed with the producer.

Weather conditions for indoor installations

Relative humidity shall not increase 50% at the highest temperature +40°C. Higher humidity is allowed at lower temperature e.g. 90% at +20°C.

Weather conditions for outdoor installations

Relative humidity can reach for short time a 100% value at a highest ambient temperature +25°C.

If the applied equipment elements of cubicles and boxes are not provided for service in such conditions, it is necessary to agree with the producer any means, which ensure reliable operation of these elements, like heating, ventilation etc.

Special operating conditions, like:

- quick changes of temperature and pressure that cause big condensation of water vapour inside of housing,
- big pollution with dust, smoke and substations causing corrosion,
- strong vibrations and shocks,
- high temperatures due to sun or oven radiation.

Transport and storage

Boxes transported directly from the producer to the place of installation are protected against damage of paint coatings by means of plastic foil.

Conditions of the long-lasting transport of cubicles and boxes are to be agreed with the producer. Cubicles and boxes are to be stored in conditions not worse than exploitation conditions.

If not agreed otherwise, admissible temperature during transport and storage is from -25°C to +55°C and during time not longer than 24h up to +70°C.

Installation

Standing cubicles are screwed to a foundation frame installed in the erection place or are screwed directly to a base by means of special screws. In case of vibrations and shocks in place of installation, cubicles can be erected on shock absorbers. Hanging boxes are fixed to a wall using fixing clamps. Spacing and size of holes in fixing elements of cubicles and boxes are given on dimension drawings of individual housings.

External joints

Connection cables for cubicles and boxes can be led from bottom or top through cable passes or glands. Number of cables, their type and place of connection are to be given in the producer's technical documentation.

ELMOR S.A.

ul. Spadochroniarzy 20, 80-298 Gdańsk, Poland

TEL: +48 (58) 763-44-88; 785-36-70

+48 (58) 762-93-64; 785-36-77

FAX: +48 (58) 762-93-19; 785-36-79

e-mail: elmor@elmor.com.pl

Website: <http://www.elmor.com.pl>

Management Board

Marketing Department